

# Options & Specifications



digital imaging systems

DP-1810P

# Panasonic®

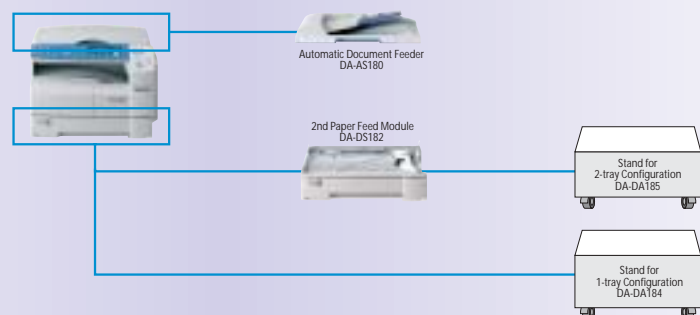
the **SMART** way to work

## DP-1810P Options

WORKIO offers a wide range of options to build a custom configuration that precisely matches current needs or to upgrade functionality in the future as your business grows.

### Function Enhancing Options

10/100 Ethernet Interface Kit	DA-NE200
PCL6 Emulation Kit	DA-PC210
Image Memory for Electronic Sort <sup>1</sup>	DA-SM08B (8MB)
	DA-SM16B (16MB)
	DA-SM64B (64MB)
	DA-SM28B (128MB)
Key Counter Cable Kit	DA-KH200



## DP-1810P Specifications

### Basic / Digital PPC

Type	Desktop
Copy / Print Process	Laser Electrostatic photographic method
Developing Process	Dry type single component imaging
Warm-up Time	Approx. 30 sec.
First Copy Time	6.5 sec. (A4)
Resolution	600 dpi
Gray Scale	256 steps
Multi Copy Speed	18 cpm (A4)
Maximum Original Size	A3
Copy Size	A3, B4 Foolscap (8.5" x 13", 8" x 13"), A4, A5
Copy Ratio	Enlargement (fixed) 200%, 173%, 146%, 141%, 137%, 127%, 122%, 115%, 103% Reduction (fixed) 97%, 90%, 87%, 82%, 73%, 71%, 68%, 64%, 58%, 50%
Zoom (variable)	50-200%
Automatic Document Feeder (Option)	50 sheets (A4) / 30 sheets (A3, B4)
Paper Feed	550-sheet paper tray x 1 + 50-sheet bypass Max.: 1,150 sheets with optional paper tray x 1
Multiple Copy	999
Exposure Controller	Photo, Text / Photo, Text
Page Memory Capacity	16MB
Sort Memory Capacity	8MB
Optional Memory <sup>1</sup>	Base Memory plus 8MB / 16MB / 64MB / 128MB
Power Requirement	AC220-240V 50/60 Hz Single phase
Power Consumption	Max.: Less than 1.2 kW Energy Saver mode: Approx. 38 Wh Sleep mode: Approx. 2.2 Wh
Dimensions (W x D x H) <sup>2</sup>	588 x 605 x 410 mm
H: To Platen Glass	
Weight <sup>2</sup>	41 kg (Excluding optional equipment)

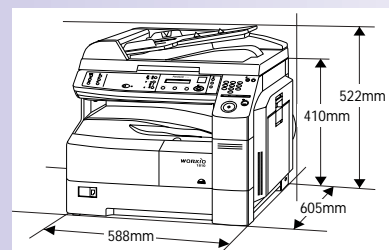
### Printer / Scanner

Printer Interface	Bi-directional Parallel (IEEE1284) Network (Ethernet 100Base-TX/10Base-T) with optional 10/100 Ethernet Interface Kit
Printing Speed	18 ppm (A4)
Printing Resolution	600 dpi
Scanning Resolution	600 dpi
Scanner Driver	TWAIN
OS	Windows® 98 / Me / XP / 2000, Windows NT® 4.0
Page Description Language	PCL6 Emulation (with optional PCL6 Emulation Kit)

### Notes

<sup>1</sup> May not be available in certain countries.  
<sup>2</sup> Dimensions and weight are approximate.

### Dimensions



Microsoft®, Windows® and Windows NT® are registered trademarks of Microsoft Corporation.  
Adobe®, PostScript® and PostScript logo® are trademarks of Adobe Systems, Inc.  
PCL® is a registered trademark of Hewlett-Packard.  
WORKIO™ is a trademark of Matsushita Electric Industrial Co., Ltd.  
All other brand or product names are the property of their respective holders.  
Design and specifications are subject to change without notice.  
Not all options may be available at the time of introduction.

### ISO 9001 Quality Management System

Our business processes which produce document, information and network products, from manufacturing to marketing, conform to ISO9001 Quality Management Systems standard. Design, development, manufacture, installation, repair and maintenance of document, information and network products, their associated devices and consumables.



As an Energy Star® Partner, Panasonic has determined that this product meets the Energy Star® Guidelines for energy efficiency.

Compact, Network-Ready  
Colour Laser Printers

**WORKIO**



Colour Laser Printers

**Panasonic®**

**WORKIO™**  
DIGITAL IMAGING SYSTEMS

Digital copying conveniences (Electronic Sorting, Image Rotation, Digital Skyshot)  
Versatile Document Manager Software  
Compact design and easy-to-use interface

# WORKiO – One Platform Doing the Job of Three

Welcome to the world of WORKiO digital imaging platforms where digital communications and imaging technology converge. Integrating the multiple functions of copying, printing and scanning in one compact, easy-to-use solution, WORKiO DP-1810P empowers your workplace with more versatility, productivity and network connectivity, and puts your business on the path to "the smart way to work".



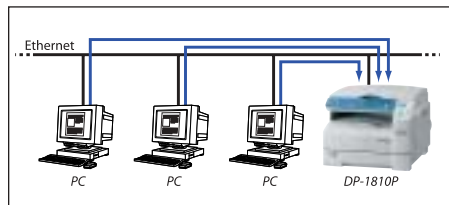
## "wingless" for true compactness

By moving the output tray "inside" and eliminating protruding paper trays, WORKiO's small footprint represents virtually all the space required for setup.



## user-friendly engineering

Low angled front panel and clean layout of buttons provide comfortable visibility and easy operation.



## network interface

WORKiO is about sharing networked resources and multiplying their effectiveness. With the 10Base-T/100Base-TX Ethernet Interface option, all networked PCs can access the power and performance of network printing from the desktop.

## compact affordable workgroup solution

Combining copier, scanner, and printer functions in a single platform with A3-size capability, DP-1810P is a very versatile solution for document processing and management needs. With the 10/100 Ethernet option, it transforms into a fully network-ready printing solution. Its space-saving "wingless" design enables installation anywhere, even on a desktop corner, saving valuable office real estate. As with all WORKiO platforms, DP-1810P is designed for maximum ease of use. ■

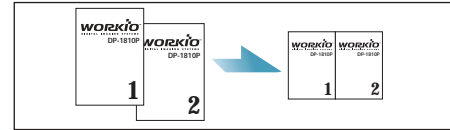
## high-speed digital copier

In digital copying mode, DP-1810P produces copies at a fast 18 ppm with sharp 600dpi quality, handles up to A3-size input and output, and offers high-efficiency features like 2-in-1 Copying\*, Digital Skyshot, and Image Rotation. Automatic Document Feeder (ADF) is available as an option to accelerate copying of multi-page originals. ■

\*Optional Automatic Document Feeder is required.

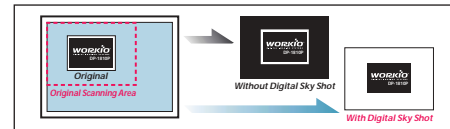
## high-speed "networkable" A3-size laser printer

When connected to a PC via the built-in parallel interface, DP-1810P can serve as a high-speed, high-quality laser printer capable of handling documents up to A3 size. Even while performing at a very fast 18 ppm (A4), this printer maintains sharp 600 x 600dpi quality. With the optional 10/100 Ethernet interface, this WORKiO printer can be shared by all PCs on your LAN. Speed and versatility can be further expanded by adding an optional PCL6 Emulation Kit. ■



## 2-in-1 Copying\*

This handy function saves paper by fitting two reduced images on one sheet.



## Digital Skyshot

When copying small documents, this convenient function eliminates annoying black borders that also waste toner.



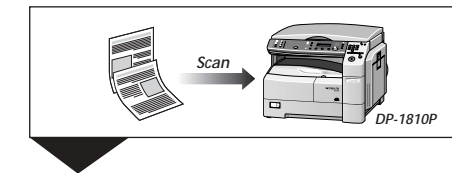
## Image Rotation

No matter the orientation of the original, this feature delivers accurate copies.

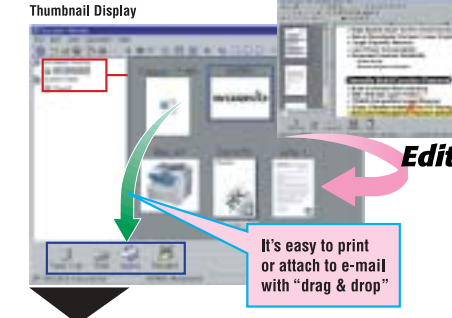
## Document Manager software

When a scanned document arrives, Document Manager notifies the user and automatically opens it. Image Viewer enables the user to easily view, annotate or attach memos to the file. With "drag and drop" simplicity, users can manage and edit documents from their desktop PC, and even share them with other PCs.

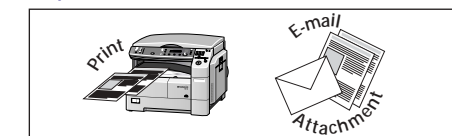
### Step 1



### Step 2



### Step 3



## scanning and desktop document management

Equipped with a TWAIN compatible scanner, WORKiO DP-1810P quickly converts paper documents up to A3-size into high-resolution 600dpi digital data for easy storage and distribution. WORKiO's Document Manager software (standard) is ready to assist with easy organization, editing, search and sharing of scanned documents right on the user's PC. ■

## environment-friendly design

Energy conservation is not only good for the environment, it is also good business. Innovative design features in WORKiO DP-1810P keep power consumption and total cost of operation to a minimum. When idle, it automatically enters Power Saver Mode and energy requirements drop significantly, and in Sleep Mode, power consumption dives to a negligible 2.2Wh. ■

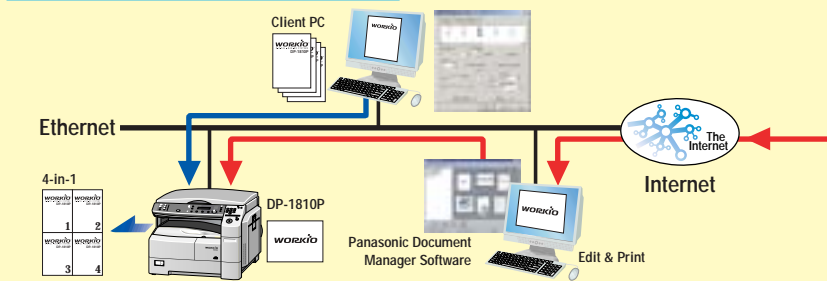


copying

printing

scanning

## WORKiO Solutions



\*Optional 10/100 Ethernet Interface Kit is required.

WORKiO DP-1810P is not simply a powerful document imaging platform. It is a step toward the office of the future. Working synergistically with our broad lineup of multifunction platforms, printers and other network-ready devices, this document solution puts you on the path to "the smart way to work".